

Une association
reconnue
par l'EPFL

An association
recognized
by the EPFL

PC-12NG HOME COCKPIT PROJECT

Sponsorship Presentation
by AéroPoly

7th of November, 2024



Credit: aviationtoday.com

TABLE OF CONTENTS

01

ABOUT US

What is the Aéropoly association all about?

02

ABOUT OUR PROJECT

A high-fidelity scale model PC-12NG cockpit at the EPFL campus

03

WHY SUPPORT US

Projects of today, challenges of tomorrow

04

HOW TO SUPPORT US

Find out the many ways you can collaborate with us!

05

CONTACT US

We look forward to working with you soon!

01 ABOUT US



WHAT IS AÉROPOLY?

Aéropoly is an association recognized by EPFL which aims to help and accompany students with their interests in the world of aviation as they undergo their studies

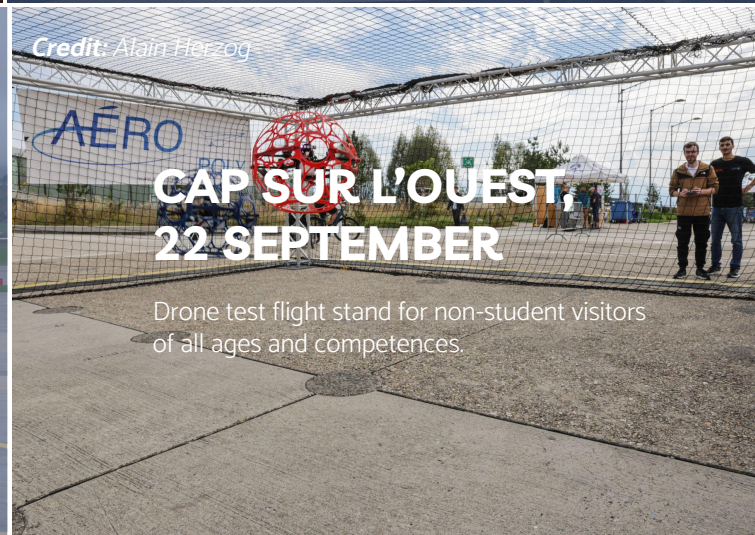
WHO ARE WE?

Our association is composed of around 50 active members. We organize multiple aviation-related events every year for students and non-students alike

AMBITIOUS PROJECTS

We are no strangers to embarking on ambitious projects alongside our members, such as our successful role in the restoration of a historic Swiss glider in 2018

OUR BEST EVENTS OF 2024



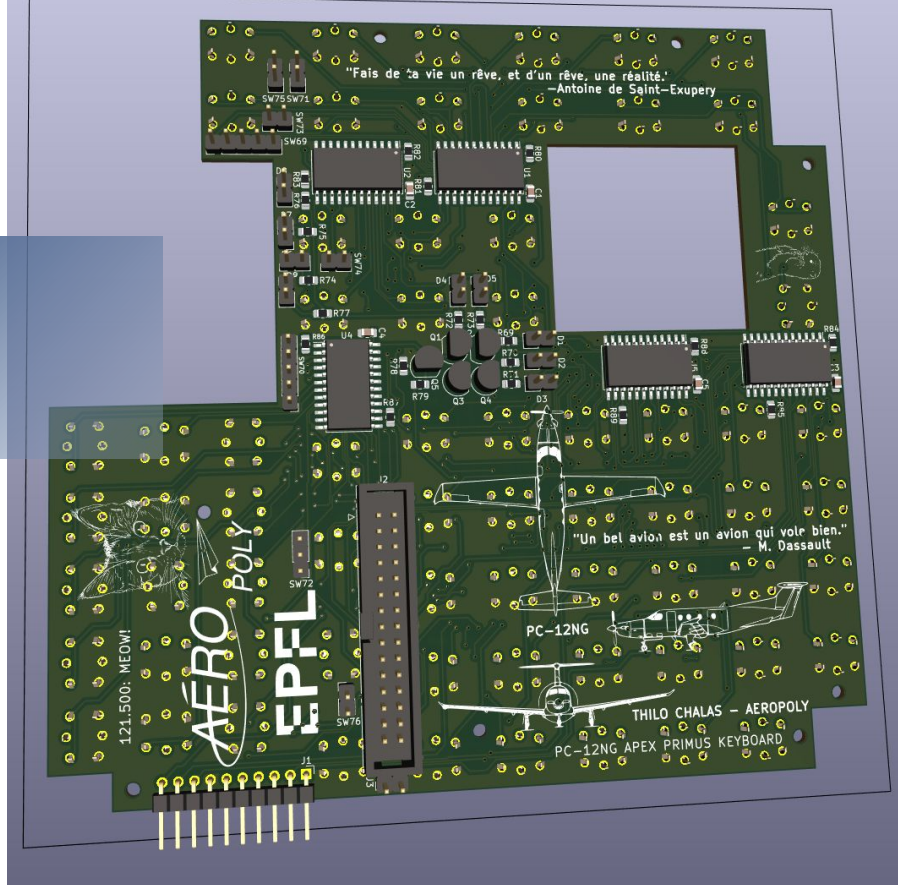
Credit: Antonin Clausse

Credit: Thilo Chalas

Credit: Rodrigo García

Credit: Alain Herzog

Credit: Thilo Chalas



02 ABOUT OUR PROJECT

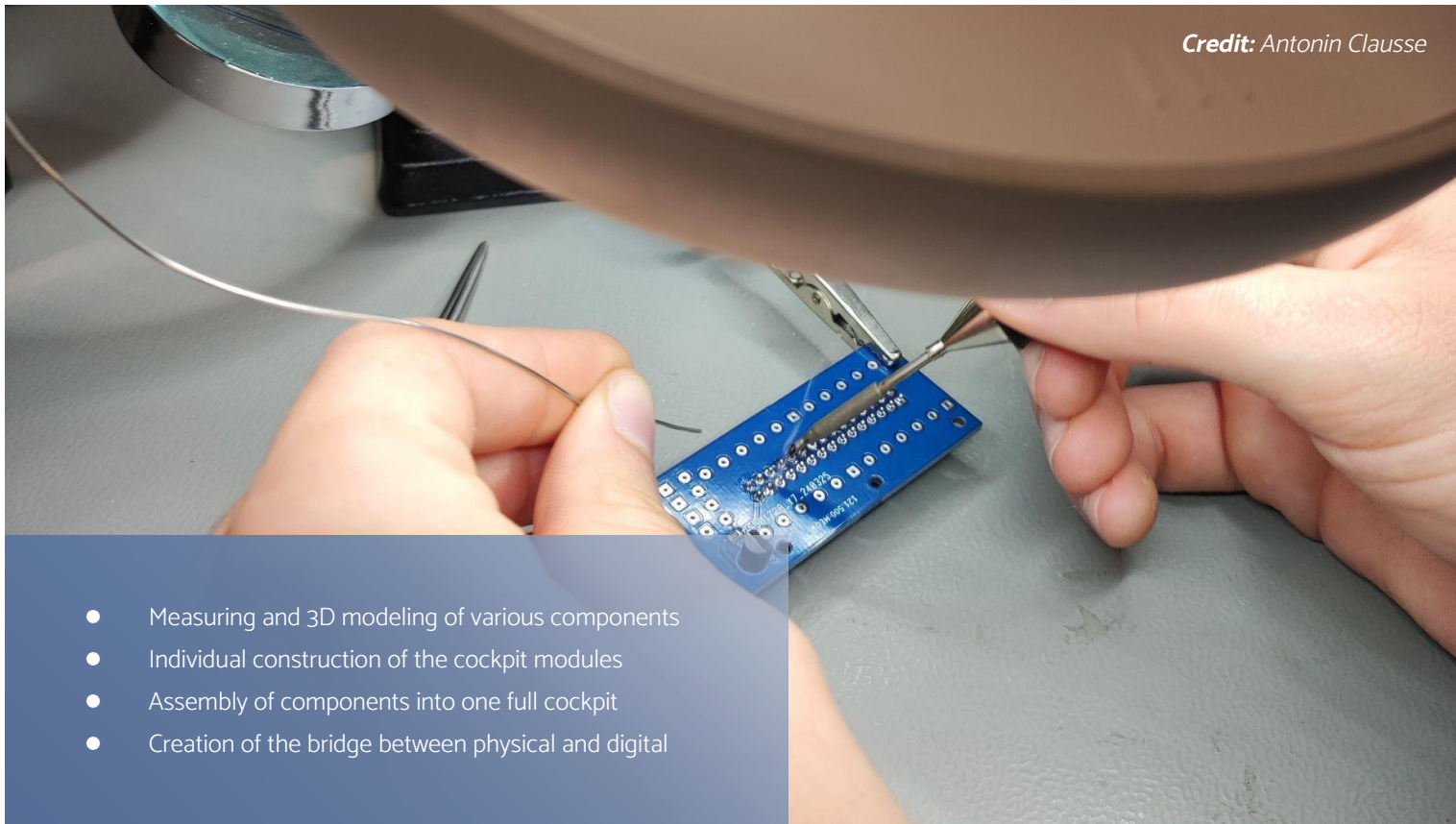
Our goal is to build a fully functional, full-size model of a PC-12NG cockpit, also referred to as Home Cockpit

The Pilatus PC-12NG was chosen because of the possibility of both Visual Flight Rules (VFR) and Instrument Flight Rules (IFR) as well as its Swiss origins. As of today, our team is composed of 5 students

STAGE ONE

- Measuring and 3D modeling of various components
- Individual construction of the cockpit modules
- Assembly of components into one full cockpit
- Creation of the bridge between physical and digital

Credit: Antonin Clausse



Credit: Antonin Clausse



- Project participants and association members will have unlimited access to the simulator
- Organization of events inside the campus to introduce students and collaborators to the world of flight simulation
- Possibility of transporting the simulator outside the premises of the campus for special events

STAGE TWO

A PILOT ALWAYS NEEDS A WINGMAN

EPFL is a very academic-oriented institution. Projects like this allow students to gain practical experience while using the knowledge acquired during classes. These interdisciplinary projects also allow students to gain experience working as a team where each member brings a specific set of competencies. Your help is an investment in education and consequently, the future



03 WHY SUPPORT US

TENACITY

Your support would enable us to push the boundaries of the project even further, ultimately allowing us to develop a fully articulated seat and responsive flight yokes

Credit: Thilo Chalas

VISIBILITY

Every year, hundreds of people visit and participate in our stands. Your brand will be visible in various places in addition to the cockpit.

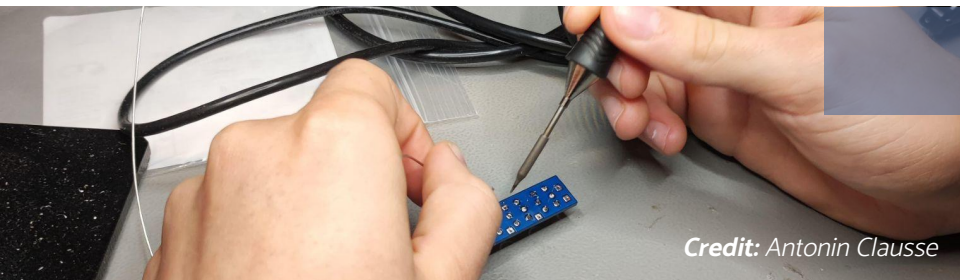


Credit: Alain Herzog

DURABILITY

The cockpit is designed for quick maintenance, long-term use and easy displacement, perfect for organizing events outside the campus

Credit: Antonin Clausse



SPONSORSHIP TIERS AND BENEFITS

04 HOW TO SUPPORT US

	Visibility during cockpit related events	Visibility during all Aéropoly events	Visibility on our newsletter and association T-shirts	Visibility on our social media on cockpit related posts	Visibility on our social media regardless of the event covered
BRONZE up to 999.- CHF*					
SILVER 1000.- to 1999.- CHF*					
GOLD 2000.- CHF* or more					

**or the equivalent in materials, parts, services, etc... minimum 50.- CHF*

Une association
reconnue
par l'EPFL

An association
recognized
by the EPFL

05 CONTACT US

Thank you for your attention! If you have any questions, do not hesitate to contact us!

Thilo Chalas

President and project manager
thilo.chalas@epfl.ch

Rodrigo García Cobeta

Head of communication
rodrigo.garciacobeta@epfl.ch
+41 078 207 57 73
contact@aeropoly.ch – @aeropoly_epfl

